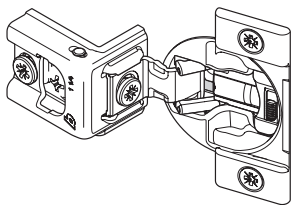
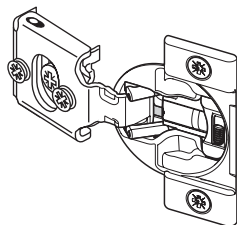


COMPACT series

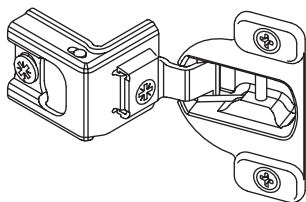
Hinge & mounting plate adjustments



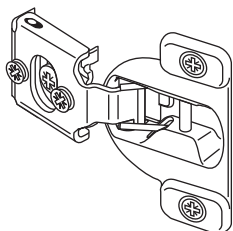
COMPACT BLUMOTION
38C/39C series
One piece — full overlay



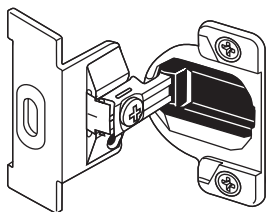
COMPACT BLUMOTION
38N series
One piece — partial overlay



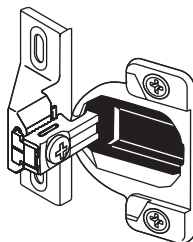
COMPACT 38C/39C series
One piece — full overlay



COMPACT 38N series
One piece — partial overlay



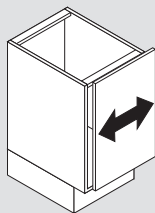
COMPACT 33 series
Two piece — partial and full overlay



COMPACT 33 series
Two piece — partial overlay

COMPACT BLUMOTION and COMPACT 38C/39C and 38N

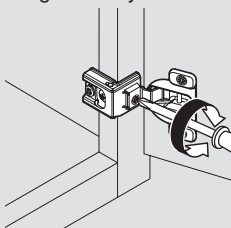
Cam side adjustment



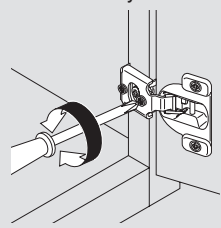
Rotate front screw counter-clockwise to increase door overlay, clockwise to decrease.

Range = 3 (1/8")

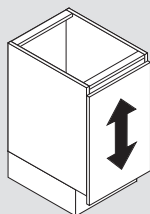
Large overlay



Small overlay



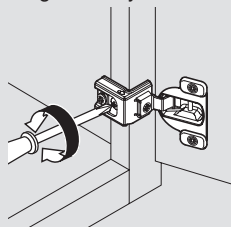
Height adjustment



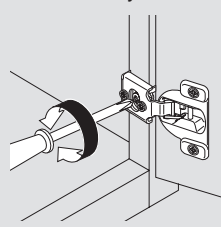
Loosen center screw. Adjust door to position and tighten screw.

Range = 6 (1/4")

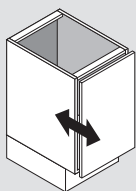
Large overlay



Small overlay

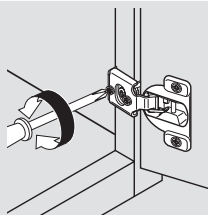


Cam depth adjustment



Rotate back screw to adjust door to position.

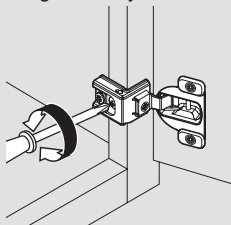
Range = -1/+2
(-1/32"/+3/32")



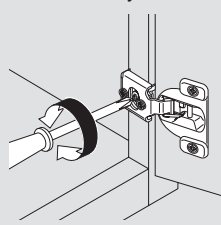
Door removal

Rotate mounting screw counter-clockwise to remove hinge from cabinet.

Large overlay

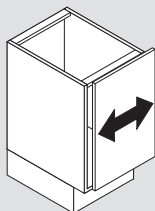


Small overlay



COMPACT 33 series

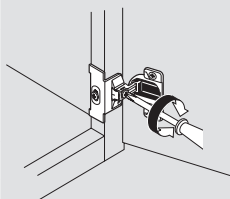
Side adjustment



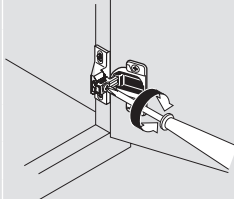
Loosen front screw. Adjust door to position and tighten screws.

Range = 3 (1/8")

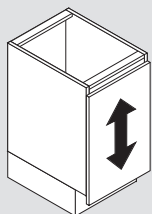
Large overlay



Small overlay



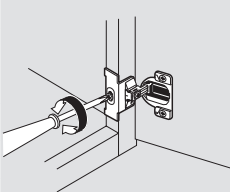
Height adjustment



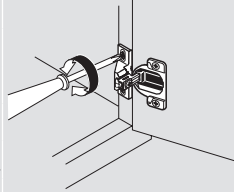
Loosen screws on the mounting plate. Adjust door to position and tighten screws.

Range = 7 (9/32")

Large overlay



Small overlay



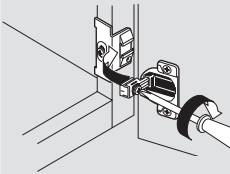
Door installation

To reinstall, slide hinge onto mounting plate, tighten screws.

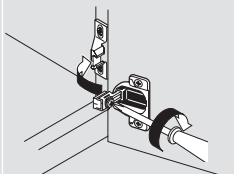
NOTE: Before finishing hinge installation, place set screw in hinge plate to prevent hinge plate movement (1-3/8" or greater overlays only)



Large overlay



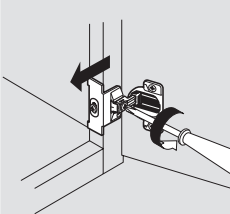
Small overlay



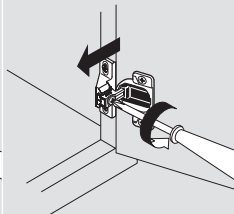
Door removal

Loosen side adjustment screw. Slide hinge off mounting plate towards center of cabinet.

Large overlay



Small overlay

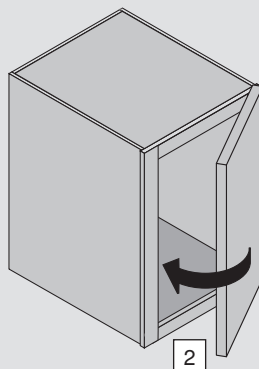
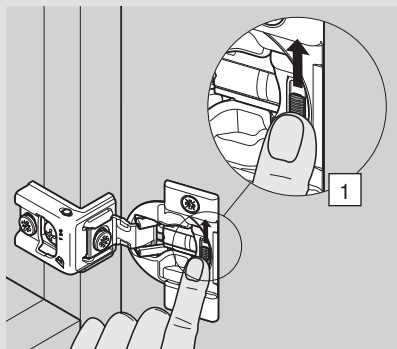


COMPACT BLUMOTION 38C/39C and 38N series

COMPACT BLUMOTION deactivation switch on the hinge cup

For small or light doors, the BLUMOTION can be deactivated on one of the hinges.

Door must be closed once for the deactivation to be complete. To reactivate, move switch back to original position.

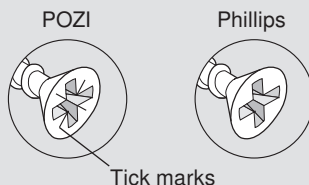


Suggested tool for installation and adjustment

POZI DRIVER and bits



A POZI screwdriver (different from Phillips) is the most crucial tool you can use to assure that full torque is applied to all Blum mounting screws. POZI screws can be identified by the distinctive "tick" marks located in the center of the screw head recess.



Blum, Inc.
7733 Old Plank Rd.
Stanley, NC 28164
800-438-6788
704-827-1345
fax 704-827-0799
www.blum.com



Technical specifications subject to change without notice.
LIT.HN6400.11.10 © 2010 Printed in USA

